

Boat International

2002

# INTERIORS



A BOAT INTERNATIONAL PUBLICATION



a personal retreat

# LADY DUVERA

Interior Design • Felix Buytendijk Design

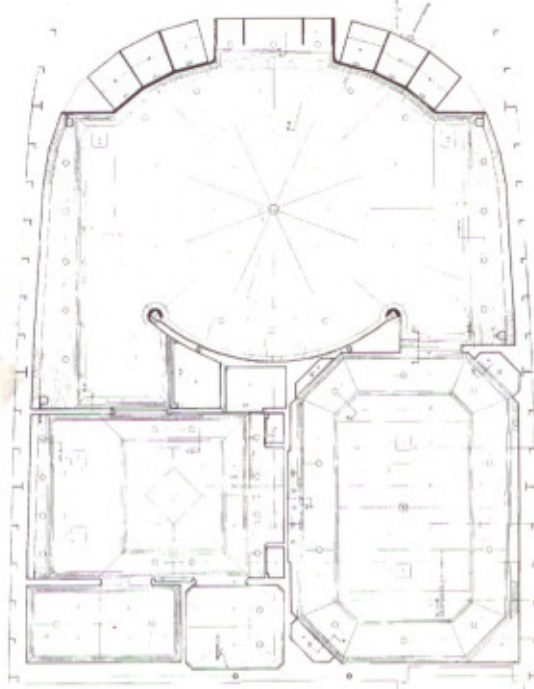


With the launching of the 43.6m Hakvoort motor yacht *Lady Duvera*, Felix Buytendijk Yacht Design has completed a grand slam for her Dutch owners in designing the interior for all three of their yachts of this name.

Approaching the master suite from the starboard lobby, a rich chestnut-stained mahogany door provides an accurate forecast of the cabinetry which lies within, with figured pommele

mahogany for the panels, built to the most exacting standards. Whereas the master door opened directly into the bedroom of *Lady Duvera's* predecessor, it now opens into a study. The deckhead is finished in gloss ivory around the perimeter and satin ivory for the recess while, underfoot, the Thai-made carpet is beige, permitting darker tones for panelling and furniture. Crowned by a cornice which incorporates rope carving,





in a honey-hued mahogany, was inherited from the last *Lady Duvera*. Its round back is reminiscent of a spider's web. The major seat in here is a ruby red sofa in Majilite, part of a stitch-perfect body of upholstery from Zijlstra International Decoration, sweeping around an aft corner facing both the window and a corner television cabinet. A glimmer surrounding cabinet door panels here and elsewhere is achieved by the use of a gold finish applied to the reveal.

the mahogany walls are unbroken by the usual rails and muntins of panelling. Black half-round shades of Christopher Wray sconces fan the flames in the wood's grain, and between them hangs a colourful textile print of Dutch traders in Nagasaki, from Rubelli. In a forward corner is a desk, a quadrant development of the kneehole design, with an adaptable system of twin-rail, gold-plated fiddles by Jado for shelving. The desk chair from Bevan Funnell,

Moving into the bedroom, which can be closed off by a pocket door, the carpet changes to ultramarine and the eye is greeted by a full span of cabinetry following the concave of the forward superstructure. Large wardrobes shoulder the central shelving, below which an electric Hafele lift produces a television with entertainment reliably imported courtesy of SeaTel satellite technology.





## a personal retreat



Facing the forward curve of cabinetry, the panel behind the bed is itself concave and covered by a narrative fabric from Rubelli, Italian in Algiers, depicting the rural industry of the harvest. Fluted mahogany columns, amplifying the impression of height, pass through the bedside cabinets which are made entirely in the more figured pommele mahogany. The smooth-bodied cabinetry style, uninterrupted by unnecessary mouldings, allows the beauty of the veneer to speak, and lends a contemporary clean-cut look to otherwise traditional furniture. The headboard and bedcover are quilted from Nobilis Tyr fabric, with a pineapple motif continuing the theme of Nature's providence. Swing-arm lights from Cantalupi softly illuminate the scene. The fabrics from the bed and its wall panel are repeated in the curtains for windows to port and starboard. A pair of wood-framed easy chairs and a cross-legged stool beneath the starboard window establish a relaxing lounge, while light from the port window creates the perfect spot for a dressing table, flanked by low chests of drawers and a pair of seashell table lamps. The curvature of the bed wall

panel generates extra room for deep hanging space, convenient for this dressing area.

The bathroom, which aboard *Lady Duvera's* predecessor was full-width, is situated in the port corner aft of the bed. Receiving the light of a large window, it is completely private. Barens' Estremos marble floors are complemented by Rosso Laguna marble on the double vanity top and around the JCD bathtub, while chrome and gold-plated hardware from Dornbracht's Bellevue collection adds a sparkle in the basins, bathtub and shower. The tripartite division of dressing mirror, shower and head compartments is echoed in columns of clear rectangles in the frosted tempered glass doors. Air-conditioning by Heinen & Hopman is controlled by touch pads with gold fingerplates to match the BTicino light switches, enabling bathroom temperature to be regulated independently of the bedroom.

In *Lady Duvera*, Felix Buytendijk has invented a contemporary look which is to the sea what the traditional country house is to the land, with a new arrangement meeting the owners' requirements exactly.

3



# Hakvoort

PERFECTION IN ALUMINIUM AND STEEL



INTERIOR LADY MARINA



LADY MARINA. 50 METER



LADY DUVERA. DELIVERED 1991



102' - 46 KNOTS, SPORT FISHING YACHT