

SHIPPING & MARINE

THE MAGAZINE FOR MARITIME MANAGEMENT

On the move

Properly executed marine transfers do offer a safe and reasonable alternative to the more familiar helicopter



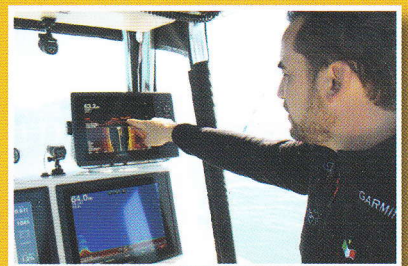
FUEL FOR THOUGHT

Why ship owners and operators must be ready for the new bunker fuel regulations



CHALLENGING MAINTENANCE

Coatings technology is advancing in order to ensure protection from corrosion without compromise



A CLEAR VIEW

Developments in marine technology now provide vessels with the ultimate information systems



Endless range

The yachts that originate from DIANA are designed to strike a perfect balance between aesthetics and technology, between comfort and efficiency. During the four decades of its existence, DIANA has conceptualised and designed many acclaimed classics, and these designs can be considered ahead of their time, as many of the ideas behind them are still reflected in today's contemporary superyachts. In the years since they were unveiled, DIANA's yachts still hold true to their winning combination of state-of-the-art technology and timeless design.

The company DIANA Yacht Design is an independent naval architect, which specialises in providing a one-stop yacht design service. The company believes that its way of working leads to a more effective solution, better tailored to its clients' ambitious desires. To ensure that each of its client's expectations are met or exceeded, DIANA has assembled the experience needed to offer assured quality management, the right yard for the best deal and synergy with distinguished partners. Alongside naval architecture, its services comprise styling and design, buildings supervision and refit projects.

Designing a luxury yacht requires all the relevant disciplines to merge seamlessly into one final product. This demands intense teamwork. At any time DIANA maintains clear and

direct lines of communication between in-house specialists and project partners. In the end, consistent high quality throughout the entire yacht is what matters most. DIANA always delivers a masterpiece, from the allure of her appearance to the immaculate details of her architecture.

Although anyone who appreciates beautiful objects would recognise the aesthetics of a DIANA yacht, the company's designs have also been recognised by those at the top of the industry, proving that working with renowned stylists is a successful approach. In February 2014 motor yacht Apostrophe won the Exterior Design and Styling Award – Displacement Motor Yachts 30m-59.99m at the Showboats Design Awards. DIANA Yacht Design was the naval architect on the vessel, with exterior styling and interior design carried out by Raymond Langton Design, and construction undertaken by Hakvoort Shipyard.

Apostrophe features a full-beam master stateroom and owner's study on the main deck. Eight guests enjoy first class accommodation in four cabins, with dedicated quarters for the captain and four crewmembers. There is a special garage for the tender in the lazarette, which is located just aft of the engine room. A folding out swimming platform is integrated into the stern and the yacht has four underwater lights.

Alongside the award for Apostrophe, DIANA also received a



nomination for motor yacht Heliad II, which was designed as a classic DIANA Yacht. Her flared bow and round stern are very recognisable and give the yacht an elegant and timeless look. The designers challenged themselves to create a layout with four fully equipped decks, which isn't often seen on a vessel only 34 metres long. The eight metre beam is quite large for a vessel her size, but greatly improves her seaworthiness and optimises interior space. Despite the relatively large beam the design still looks sleek and well proportioned. A lot of thought also went into the ship's engineering and construction. The engineers put in great effort to make the construction easier for the craftsmen to build and for the crew to maintain after completion. Heliad II is a complete, easy to use, spacious super yacht with features normally only seen on larger vessels.

The vessels that DIANA has completed since the company was established create a fleet that embodies the very beauty and elegance of what comprises a true yacht. This dedication to innovation continues with each new project, and in 2014 DIANA has several new contracts underway – some of which are discussed on its website. For example, currently under construction is the 63.3-metre motor yacht with project name Zeus. Planned for completion in 2017, the owner had some very specific requirements, which René van der Velden has beautifully

translated in this design. Sinot Yacht Design will draw the complete interior and Diana Yacht Design is in charge of the naval architecture, while Hakvoort Shipyard will build the vessel.

Alongside orders already taken, DIANA also proposes new designs to the market. One of the most interesting of these is the Diana Navitas 63 metre green power yacht, which is designed to meet the continuously changing needs of the user in a sustainable way. This yacht has all the facilities and looks you may expect from a luxury modern super yacht; multiple large sundecks, a beach club including pool, extendable swimming platforms and a large luxury owner's suite with private sundeck, Jacuzzi and 180° view over sea. However these are combined with green hybrid technology such as lightweight hull, touch screens for guests so they can be aware of their energy consumption, solar panels, insulation, LED lighting and smart energy management, in order to create one of the most sustainable and comfortable yachts in its class.

What all of these yachts have in common are the distinct, intrinsic DIANA qualities that are made to stand the test of time. They are instantly recognisable as supremely high quality vessels, which proudly embody the company's philosophy of 'Endless Range'. ●

DIANA Yacht Design

www.dianayachtdesign.com

- Motor yacht Apostrophe won award in 2014
- Works with world's best yacht builders and stylists
- Proposed design for 63m green power yacht



The Orange Boathouse

yacht services and technologies

The Orange Boathouse brings a wealth of experience, information and hands-on yachting knowledge, with the aim to protect the soul of your yacht during its lifetime.

As an independent establishment we can deliver what is wanted or what is the best for the project, always driven by the requirements needed. That's our challenge whether it is new build, refit or maintenance.

At The Orange Boathouse we have been bundling services and have created a technical central point in different locations around the Mediterranean, capable of handling all of your yacht maintenance and services. A reassuring thought when a sudden technical problem appears.

The Orange Boathouse
Zwanebloem 92 - 1724 XX Oudkarspel
Netherlands
T: +31 6 54307191

www.theorangeboathouse.com

