

SYI 2014 | VOLUME 9 | ISSUE 2

NEW NAVAL  
ARCHITECTURE & DESIGN

# SuperYacht

i n d u s t r y

**Fast & Furious**

FORMULA ONE-STOP SOLUTION

**Ultimate Lürssen**

HIGH-END COMFORT & LUXURY

**Apostrophe**

JEWEL IN THE ART DECO CROWN



# Apostrophe

A JEWEL IN THE ART DECO CROWN

LAST YEAR THE 39.7M CUSTOM BUILD APOSTROPHE WAS SUCCESSFULLY DELIVERED AT THE HAKVOORT SHIPYARD IN THE NETHERLANDS. NO COMPROMISES were made when designing her steel and aluminium superstructure, featuring a strikingly original exterior profile. Her matching interior offers a full-beam master suite on the main deck plus superior accommodation for eight guests in four double cabins on the lower deck. "As I do not envisage making a yacht of this pedigree more than once, our philosophy was one of 'if we're going to do it, we'll do it right'," commented the owner.

PHOTOS BY PETER SEYFFERTH – THEYACHTPHOTO.COM





During the keel laying ceremony at the Hakvoort Shipyard, the owner described the project as his 'baby' and pledged to push himself to the limit to ensure Apostrophe would become one of the finest vessels afloat in the world today. He was certainly true to his word as every suggestion by the interior and exterior architects was accepted, regardless of cost. No compromises were made in any area of a superyacht which is a tribute to the master craftsmen that created her, the designers, the exceptional support from Moran Yacht and Ship and the owner's dedication to perfection.

### Meeting Challenges

Naval architecture, construction and engineering design for the challenging project was performed by Diana Yacht Design, which successfully met the brief to incorporate all the very latest technologies while keeping maintenance requirements to a minimum. Bart de Haan from Diana Yacht Design stated: "The design of superyacht Apostrophe posed a few challenges. Her owners wanted the yacht to achieve a top speed of not less than 13.1 knots with limited power. To make this happen our architects [created] the hull shape and added a bulbous bow to reduce resistance. In the end this resulted in a top speed of 13.3 knots which is bang on target. Besides the required speed the design has some features which challenged the engineering team to come up with clever solutions."

### Dramatic Looks

The challenges in terms of her interior design and the exterior styling were solved by Reymond Langton Design, during the 4-year project. "Apostrophe has the spirit and the panache of a far bigger boat than her 40m would suggest," mentioned Pascale Reymond. "There are very few boats that have so much detail – both in terms of wood and metal – in such a space. The way our complex brief has been met by the shipyard has been fantastic. It's one thing to design a yacht like this but another thing altogether to actually make it. If you appreciate Art Deco, Apostrophe is a jewel in the crown." >>





## SPECS

Length o.a.	39.70m
Beam	8.30m
Draught	2.55m
Displacement	335t
Naval Architecture	Diana Yacht Design
Exterior design	Reymond Langton Design
Interior design	Reymond Langton Design
Classifications	Lloyd's +100A1 SSC Yacht Mono G6 + LMC, UMS and MCA
Main engines	2x Caterpillar diesel engines type C18DITA, each with an MCR of 500kW at 2100rpm
Gearbox	Reintjes WAF 264L
Steering Gear	Rolls-Royce/Tjenford JR2.130
Generators	2x Northern Lights, type M1066A1/ 105KW 3PH
Stabilisers	Quantum, QC-1200 Zero Speed
Bow and stern thrusters	Jastram 70kW each
Speed	cruising speed 11.5 knots, max speed 13.3 knots
Range	3,950 nm at 10.5 knots
Fuel capacity	45,000 litres
Fresh water capacity	10,000 litres
Watermakers	HEM: 2 x 5,000 litres each

Apostrophe's exterior looks reflect the owner's desire for a very modern looking boat with dynamic, curved lines. Curvaceous windows in the owner's area on the main deck and the sky lounge above accentuate the elegant long lines. The way those lines are drawn from the front of the boat to the aft further emphasises the length, while the curved surfaces add extra dynamism to the profile and sculptural form.

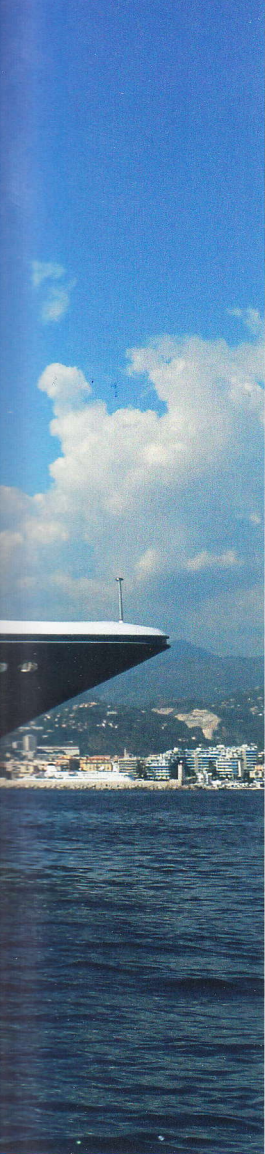
All this is reinforced by an innovative colour scheme: black windows, a grey hull and a pristine white superstructure break up the height and stretch Apostrophe's visual appearance still further. There are also lots of small details in the exterior, including stainless steel handrails throughout the vessel, grey windshield glass, the flush layout of the windows and the curved sliding doors to aft. The latter doors have no visible frame so appear to be glass from top to bottom.

## Lavish Interiors

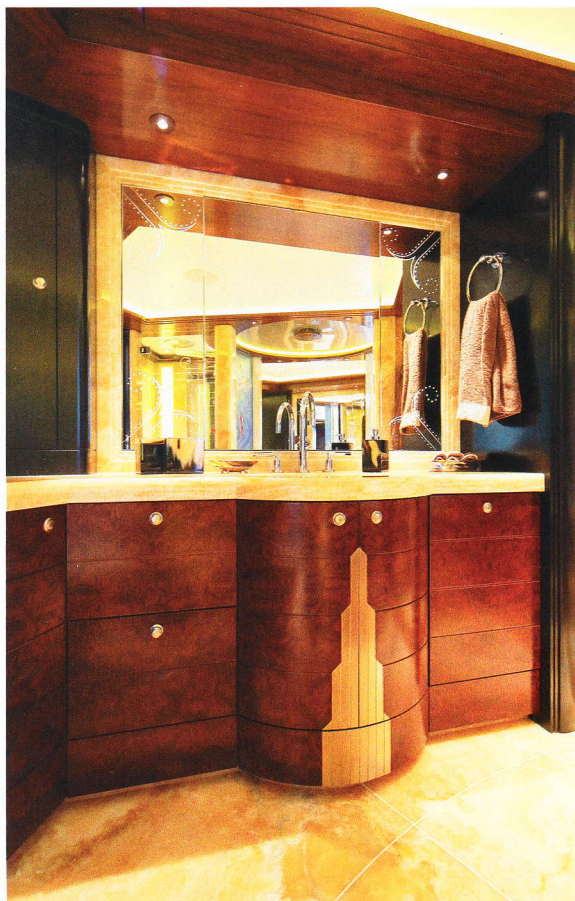
Apostrophe features very extravagant interiors with an overall style of Art Deco combined with a genuinely exceptional level of fine detailing in stainless steel, brushed nickel, white gold leaf and mother-of-pearl inlays.

The key woods on board Apostrophe are stained brown walnut and ebonised makassar, the balance between this dark joinery and the soft colours used elsewhere produce a modern and homely feel. This is further reinforced by a selection of specially commissioned artworks, sculptures and lamps, plus a wealth of materials and fabrics, and custom carpeting with all kinds of weaves and patterns. There is also an extravagant use of leather with exquisitely detailed stitching. The unique mother-of-pearl droplet design comes back in the beds, >>













doors, mirrors, panels and many other places.

While Apostrophe is heavily influenced by Art Deco as a theme, the designers have deployed a fine, scaled-down form that reflects the length of the yacht and ensures it does not become overwhelming. The designers have clearly got the proportions right with lots of wonderful details that give Apostrophe a personality all of her own. The marquetry is very subtle throughout and even included in the texture of the wood, which was very difficult to achieve.

The artworks have also been ingeniously integrated into the architecture, including specially commissioned replica paintings. These are superbly made after the artists were dispatched to the relevant museums in Prague and Vienna to spend time in front of the originals.

## Circular Elements

Apostrophe's main deck comprises the owner's stateroom forward, a lobby with stairways to the guest quarters and sky lounge, a galley/pantry, a lounge with dining room and an aft seating area with bar.

The full-beam master stateroom is complete with a walk-in dressing room, an owner's study/office and a spectacular bathroom. A clever combination of design, lighting and materials maximises the volume >>





“

*Apostrophe has the spirit  
and the panache of a far  
bigger boat than her 40m  
would suggest.*

of the entire area and a sense of perspective open the spaces up to each other. The grandest statement of all is made by the extravagant headboard and ceiling unit, giving a true flavour of the 1930s.

The owner's bathroom is furthest forward and can be entered from either port or starboard. It is joined in the centre by a circular bathtub and shower that can be accessed from each side of the bathroom. The bathroom is finished entirely in onyx marble, including the shower floor and countertops.

Entering Apostrophe through her main entrance will showcase her remarkable open stairwell with a custom designed glass-encased pillar from Crystal Caviar. This stunning chandelier piece is light and sculpture at the same time, offset to maximum effect by the woven leather bannister with intricate stitching.

The first thing one notices when entering the main lounge is the overall use of circular elements, brought here from the outside in. Apostrophe's owner is a fan of curved glass and desired his windows to reflect that in both the master stateroom and the lounge.

## Anything but an Illusion

The bridge deck is home to a spacious wheelhouse with vertical windows, a radio room, a captain's cabin with ensuite bathroom, a day toilet, a lounge and an elaborate aft deck arrangement.

The owner intends the bridge deck to be the main living area, hence the decision for a relatively modest lounge and a much larger aft deck area.

The sun deck contains a full-service bar, a Jacuzzi, sun pads and recliner lounges and life rafts concealed behind hatches. The freestanding Jacuzzi is significantly larger than would be expected on a 40m yacht, its front is elaborately finished with decorative scheme of a barrel surf in silver blue on the backlit glass panels.

The forward area of the lower deck contains two double crew cabins, each with their own bathroom, a crew lounge and a laundry room. Amidships are four superior guest cabins, accessed by a singularly impressive lobby. Aft of the engine room is a lazarette to store a tender and water sports toys and equipment. A fold-out swim platform is integrated into the stern and extends



out to offer 3m of additional space for relaxation.

Descending down the stairway to the semi-circular lower deck lobby one has the impression of entering a grand space. Directly ahead is an integrated wall panel featuring an exceptionally realistic copy of the iconic Gustav Klimt painting The Kiss.

Each guest cabin has the same architecture but each has a distinctive personality thanks to the detailing, lamps, art and colour palettes. The large oval-shaped portholes are connected together to create the effect of one large window from the outside.

In addition to individual colour schemes, each guest cabin has its own art above the bed, namely a mirrored glass and gold leaf piece and art canvas by Jan Coutts and other exceptional works of art.

i. [www.hakvoort.com](http://www.hakvoort.com)

## Main Suppliers & Subcontractors

**Archer & Smith** Macassar Ebony Dining table, Salon tables, Side tables | **Atlas Carbon** Cranes | **AWLGrip** Exterior paint | **Caterpillar** Main engines | **Cramm Yachting Systems** Passerelle & bathing ladder, Sliding Davit | **Crystal Caviar** Chandelier in staircase, Lamps owner's stateroom, Artworks in main salon and skylounge | **De Keizer Marine** Dekasis AMS system | **Diana Yacht Design** Naval architect | **DKT artworks** Glass art in owner's bathroom, Bar on sundeck and lobby bridge deck, KLIMT replicate paintings in guest area and dining, TV screens in owners stateroom and skylounge | **FURUNO** Radars, GPS | **Gaggenau** Faema Coffee machine, Rational steam oven, Electric Grill | **Hakvoort Shipyard** Passerelle & bathing ladder | **Heinen & Hopman** Air conditioning manufacturer | **HEM** Watermakers | **Hoshizaki** Foster fridges, Ice cube machine | **Imtech** NAVCOM | **Jastram** Bow, Stern thrusters | **Lloyd's Register** Class | **Miele** Hob, Microwave, Dishwashers, Wine conditioner | **Nicoverken** Hamann Sewage system, Jets Sewage system | **Northern Lights** Electricity generation, Electronic charting system | **Novec** Fire control system engine room | **Quantum** Stabilisers | **Raytheon Anschütz** Autopilot | **Reintjes** Gearbox | **Reymond Langton Design** Exterior stylist, Interior design | **Rolls Royce Tenford** Steering gear | **Technoship** Ultra Fog Watermist, Steen windlass | **Unlimited Interiors** Interior furniture manufacturers | **Van Voorden** Propellers