

MINI-MEGAYACHTS  
3 NEW 80+ FOOTERS

# ShowBoats

## INTERNATIONAL



**EXCLUSIVE**

208' *SuRI*'s extreme  
adventures in Antarctica

### GET READY **CHARTER SPECIAL**

TOP MED DESTINATIONS

HOW TO BEAT THE CROWDS

ADD A SUBMARINE OR JET PACK

APRIL 2013

A Class Act... **BENETTI'S 132' PETRUS II**

**Plus**

HOW RACE TECHNOLOGY TRANSFERS TO SUPERYACHTS





# ONLY NOW



TURKISH YARD TANSU YACHTS' LATEST LAUNCH IS AN INTRIGUING BLEND OF STYLES AND TECHNIQUES, COMBINING WOOD CONSTRUCTION, GRAY PAINTWORK AND MARTIAL LINES WITH A WARM, LUXURIOUS INTERIOR.

TEXT BY BRUNO CIANCI PHOTOGRAPHY BY MARC PARIS





*these pages*

Exceeding the standards for Mediterranean cruising, Tansu Yachts continues its ethos of large, open deck spaces designed for outdoor entertaining, such as the welcoming aft deck (above) and the minimalistic top deck (below).







*"If I were to build a yacht thinking just commercially, I should always use steel and aluminum for my builds. But there are other factors and parameters to be taken into consideration when it comes to a yacht commission; therefore, let me plead the case of cold-molded wood once in a while."*

These are the words of Riza Tansu, a Turkish boatbuilder since 1996. The Istanbul-born industrial designer's first brand was Troy Marine, after which he established Tansu Yachts in 2006. The philosophy behind all of Tansu's boats is pretty similar, and his latest models are easily and definitively recognizable as Tansu craft. As they are primarily intended for Mediterranean use, they favor large, open decks and outdoor amenities, recalling the unmistakable features and functionality of working boats. Even military vessels have influenced Tansu. It is not by chance that several editions of *Jane's Fighting Ships* sit on the shelves of his office in Kanlica on the Anatolian shore of the Bosphorus. In fact, all Tansu yachts built so far but one (*Zero Two*) feature aggressive gray hulls.

The latest launch, 111-foot *Only Now* was built in a 17-month period and delivered to her proud owners in August 2012. Two ceremonies marked the occasion: the first on the christening and the launching; the second at Tansu Yachts' headquarters underneath the imposing Second Bosphorus bridge, where we meet.

"*Only Now's* concept and sketches have been in a drawer and in my mind for a while," says Tansu. "I was sure that sooner or later I would sell this yacht to the present owners. I knew what they wanted and was confident about what my team and I had created. It took some patience, but in the end I received the phone call I was expecting. During a few meetings we upgraded the project, played a little with the 3D models, slightly increased the length to 33.9 meters and the keel was finally laid."

The building material was something Tansu seldom uses but something Turkish boatbuilders traditionally have plenty of skill and

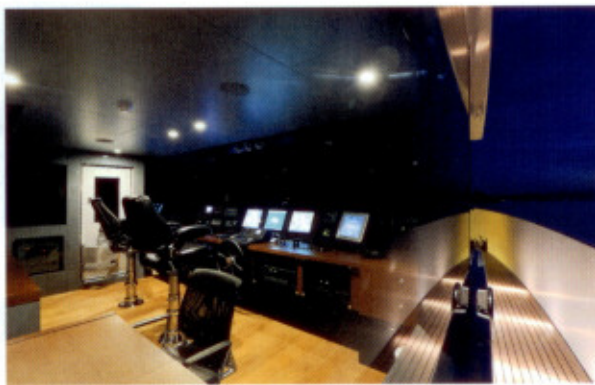
experience with: wood—four layers of wood strip planking and cold-molded fiber epoxy coated hull to be exact. The latter is reinforced and supported by transverse bulkheads, frames and longitudinal stringers, saving a lot of weight and improving overall performance at sea.

"If we compare *Only Now's* weight to that of a previous steel-aluminum build like *Nomade* [now *Bartender*], which is only three meters longer, the difference is approximately eighty-five tons: one hundred-thirty-five versus two hundred-twenty," says Tansu. "To be honest, these two yachts do not much resemble each other, but still the figures can give you an idea of the advantages such a yacht can take out of the chosen building material."

*"Only Now was designed and built to please customers who mostly want to cruise, enjoy sun and outdoor life across the Med with a limited number of guests on board."*

— RIZA TANSU





*these pages*  
After listening to his clients' requests and getting to know their cruising lifestyle, Tansu omitted the dining table from the main salon, creating free-flowing social areas indoors and out.



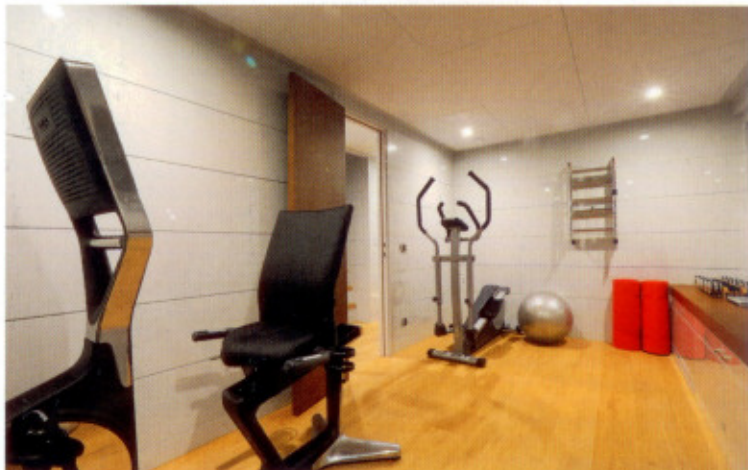


The facts back up his assertions: Powered by two 1,700-hp Caterpillar C32 ACERT-E1 engines, this planing hull can reach up to 22 knots with a cruising speed of 18.2. Overall fuel consumption at maximum speed is 181 gallons per hour, but this can be nearly halved by decreasing the knots down to 17, at 95 gallons per hour. Obviously, the range at full load varies accordingly: 2,500 nautical miles at nine knots; 1,500 at 15 knots; 900 at cruising speed. What we are dealing with is a performance cruiser indeed—exactly what the owners were aiming for.

"Just like any other Tansu yacht, *Only Now* was designed and built to please customers who mostly want to cruise, enjoy sun and outdoor life across the Med with a limited number of guests on board," says Tansu. "I would not have any problem working on a layout with a higher amount of cabins, but I happened to conceive and build most of my yachts under the same rules and requests: a lot of space allocated to the open and common areas, with tenders and cranes an integral part of the design itself, and less space devoted to the cabins and indoor areas in general. For example, since the owners have ninety-five percent of their meals outside in summertime, we decided not to put a dining table inside."

This does not mean *Only Now* lacks indoor space. On the contrary, the main deck includes a large salon, a galley and the pilothouse. Access below is provided by a stairway next to a convenient dayhead. Belowdecks, a corridor leads back to the full-beam master with his-and-hers en suites, while forward is a fitness center, a twin-bed cabin and the VIP forward; both staterooms have en suites. The crew quarters, whose access is from the starboard gangway on the main deck, is not located below the foredeck: instead, it is amidships, serving as a buffer between the guest cabins and the engine room.

Outdoors, the main deck seats eight guests around an elliptical-



Gray and white lacquered walls complemented by warm oak in the guest areas make a nice contrast with the exterior's severe lines and military-inspired paint scheme.





shape custom dining table surrounded by Vitra armchairs. A B&B Italia "Charles Outdoor" freestanding sofa, two single armchairs from the same line and a custom sofa placed over the lazarette can together seat at least 10. "Two doors instead of one grant access to the deck salon," Tansu says. "We chose two entrances for two reasons. The first is functional: we wanted to divert the traffic to the sides of the yacht, a solution that enables people to walk from the aft sofa towards the salon without turns. The second reason is merely aesthetic: the owners wanted to install outdoors a portrait of an unknown lady, painted on aluminum plate, which they truly care for. This could be put only between the two Bofor doors we picked. The result is an almost perfect outdoor symmetry; the stairs to port, leading to the flybridge, are the sole exception to the rule." Further lounging and sunbathing spaces for guests are on the flybridge and the foredeck and can be optionally covered by awnings.

The main deck, foredeck and flybridge all feature teak decks and stairs. On the flybridge another exception to the reigning symmetry is found: an 1,760-pound Opacmare crane installed to starboard, while the Novurania RIB tender is positioned longitudinally and perfectly centered, its nose set into a niche molded in the back of those custom-made lounge units.

The interior décor, particularly in the main salon, shows a great deal of warmth, in deep contrast with *Only Now's* sharp exterior lines

these pages

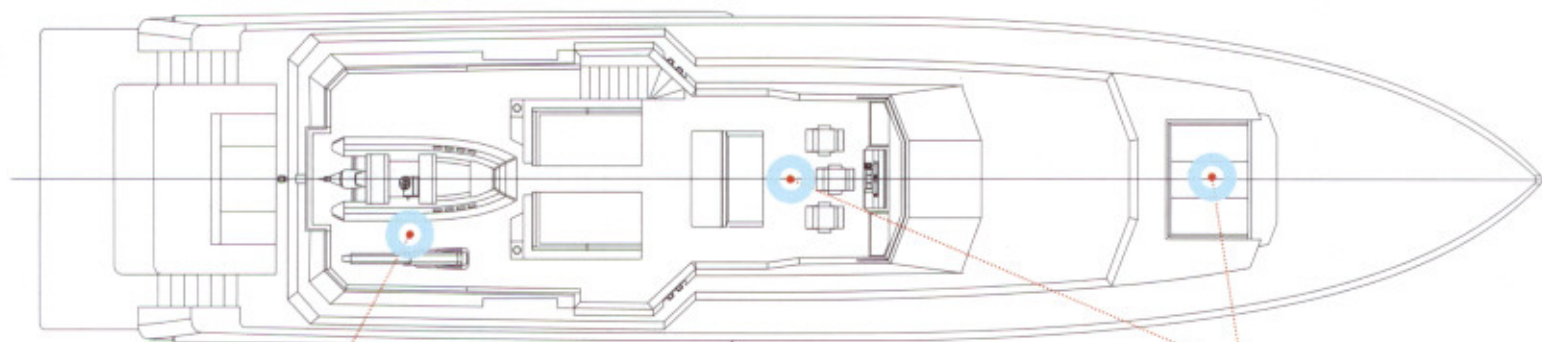
*Only Now's* three staterooms are located below decks and are separated from the engine room by the crew quarters. The accommodations deck is rounded out by a gym, which is finished to the same quality as the guest staterooms.

and high-tech general appearance. Most of the yacht's vertical surfaces are covered with lacquered gray or white panels. An exception is a bulkhead in the main salon, which has been covered with oak panels. In this crucial area, the owners wanted to create a 1950s atmosphere with these panels as well as Knoll and Carl Hansen free-standing furniture, an abstract painting and a vintage monochrome photograph. Non-slip oak planks and other fine woods have been chosen for the parquet flooring on both decks and for all internal doors and stairs, while lacquered panels decorate the ceilings. The minimum headroom is just under seven feet.

Tansu is already looking forward. "The construction of two yachts, a thirty-seven-meter in wood and a steel-aluminum thirty-eight meter have just started," he reports. The biggest Tansu build to date, the 119-foot *Nomade*, will soon be overtaken. While the owners of *Only Now* can finally enjoy their present, Riza Tansu seems to be well focused on the future.

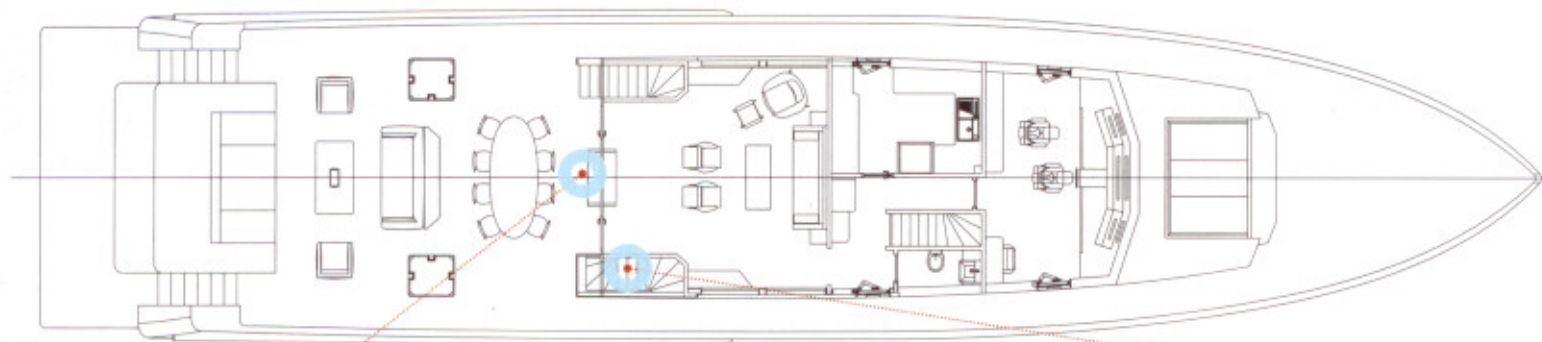
**SB** ENHANCED DIGITAL CONTENT ON THE IPAD APP





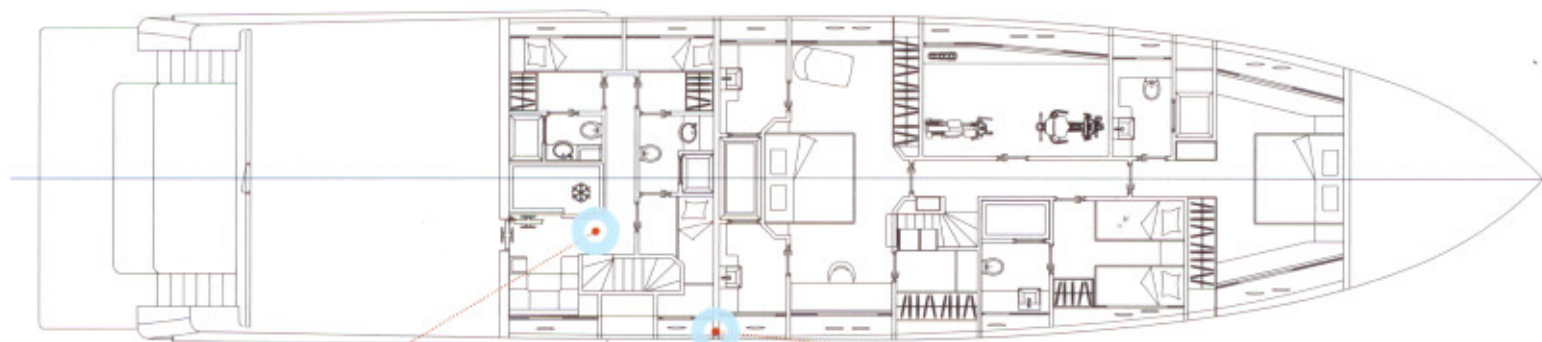
**TENDER RETRIEVAL:** An 1,760-pound Opacmare crane hauls the 14-foot Novurania RIB tender.

**SUN PROTECTION:** The foredeck and flybridge seating and lounging areas can be covered by awnings.



**SEEING DOUBLE:** Two doors direct guests to walk the salon's outer perimeter and create space outdoors to hang the owner's painting.

**EASY ACCESS:** The crew enter both the engine room and crew quarters through the starboard stairway on the main deck.



**CREW:** The crew accommodations, comprising three cabins and a mess area, separates the master from the engine room.

**CONSTRUCTION:** Four layers of wood strip planking and cold-molded fiber epoxy make the hull material.

### Specifications:

**Builder:** Tansu Yachts

Istanbul, Turkey

Tel: +90 532 265 3323

Email: [info@rizatansu.com](mailto:info@rizatansu.com)

[www.rizatansu.com](http://www.rizatansu.com)

**LOA:** 111' 3" (33.9m)

**LWL:** 103' (31.4m)

**BEAM:** 24' 7" (7.5m)

**DRAFT:** 5' 7" (1.7m)

**DISPLACEMENT:** 135 tonnes

**POWER:** 2 x 1,700-hp Caterpillar C32

**SPEED (MAX/CRUISE):** 22/18.2 knots

**RANGE:** 900 nm @ 18.2 knots

**BOW THRUSTER:** ABT Trac

**GENERATORS:** 2 x 40kW Onan, 1 x 11kW Onan

**FUEL CAPACITY:** 5,178 gallons

**FRESHWATER CAPACITY:** 792 gallons

**OWNERS AND GUESTS:** 6

**CREW:** 5

**TENDER:** 14' Novurania 430

**CONSTRUCTION:** Cold-molded wood/epoxy

**CLASSIFICATION:** RINA

**NAVAL ARCHITECTURE:** Diana Yacht Design

**INTERIOR AND EXTERIOR DESIGN:** Tansu Yachts